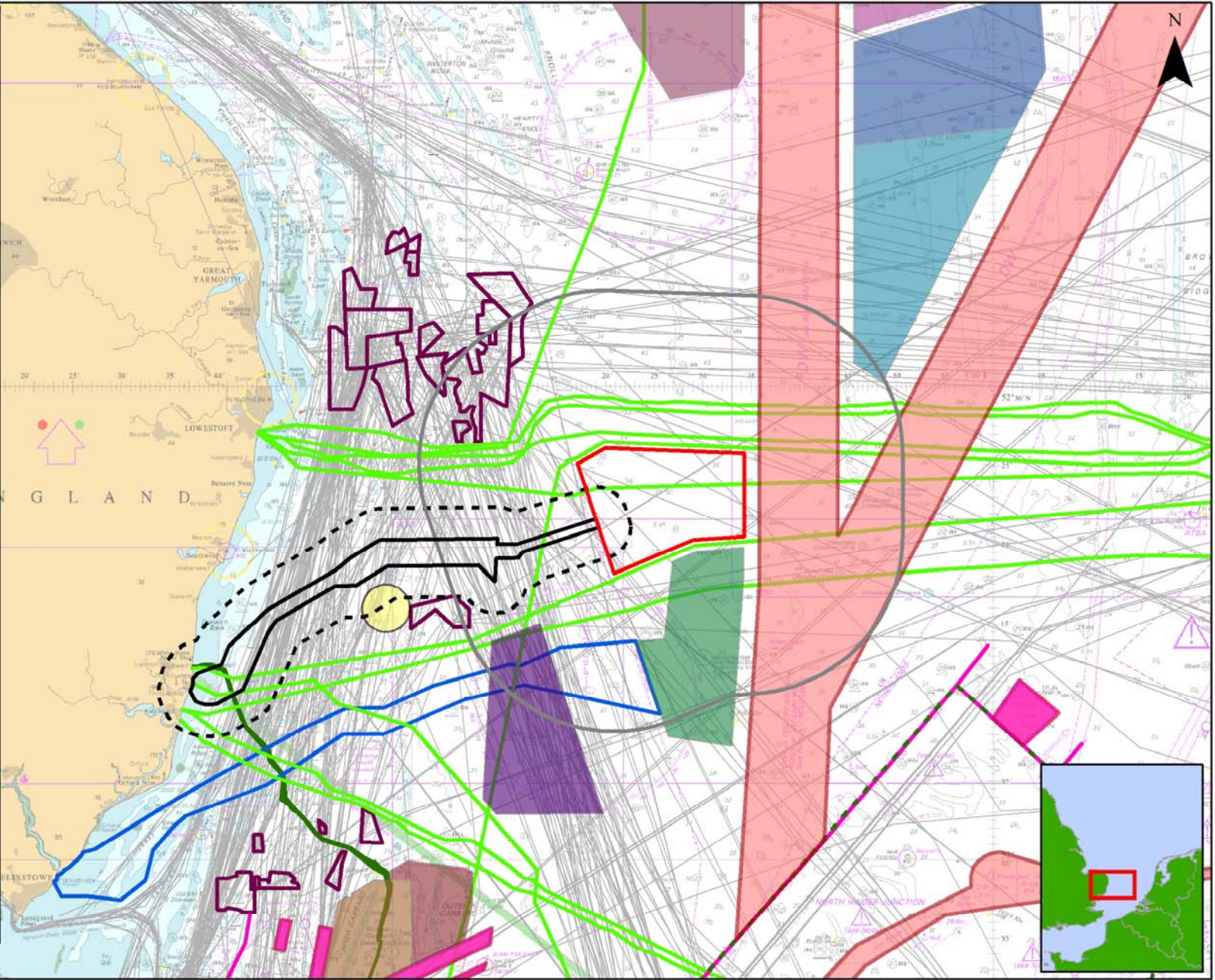


- East Anglia ONE North**
- Windfarm Site
 - Offshore Export Cable Corridor
 - Shipping and Navigation Study Area
 - Offshore Cable Corridor Study Area
- Other Windfarms**
- East Anglia ONE
 - East Anglia TWO
 - East Anglia THREE
 - Norfolk Boreas
 - Norfolk Vanguard East
 - Norfolk Vanguard West
 - Galloper
 - Greater Gabbard
- IMO Routing Measures**
- TSS
 - DWR
 - Precautionary Area
- Ship to Ship Transfer**
- Southwold Oil Transshipment Area
- Other Subsea Cables**
- Telecoms
 - East Anglia ONE Cable Corridor
 - Greater Gabbard Power Cable
- Marine Aggregates**
- Dredging Area
 - BMAPA Transit Route



Rev	Date	By	Comment
0	14/05/2019	CL	First Issue.

Prepared:	AF
Checked:	SW
Approved:	SW

1:1,100,000
Scale @ A3

0 5 10 20 Km

This map has been produced to the best known information at the time of issue, and has been produced for your information only. Please consult with the appropriate authorities to see what the correct route is for your vessel before using the information contained on this map. The publisher cannot be held responsible for any loss or damage to any vessel or other property in respect of any error or omission in the information contained in this map and will not be liable for any loss, damage or expense caused by such error or omission.

© Crown Copyright and SeaZone Solutions Limited. All rights reserved. Product License No. 002015-001. This product has been derived in part from material obtained from the UK Hydrographic Office with the permission of the Controller of Her Majesty's Stationery Office and UK Hydrographic Office. NOT TO BE USED FOR NAVIGATION.

East Anglia ONE North

Navigational Features Overview

Drg No	EA1-GEN-DA-SPR-008349	Datum:	WGS 1984
Rev	0	Projection:	World Mercator
Date	14/05/2019		
Figure	14-1		